



EJScreen Community Report

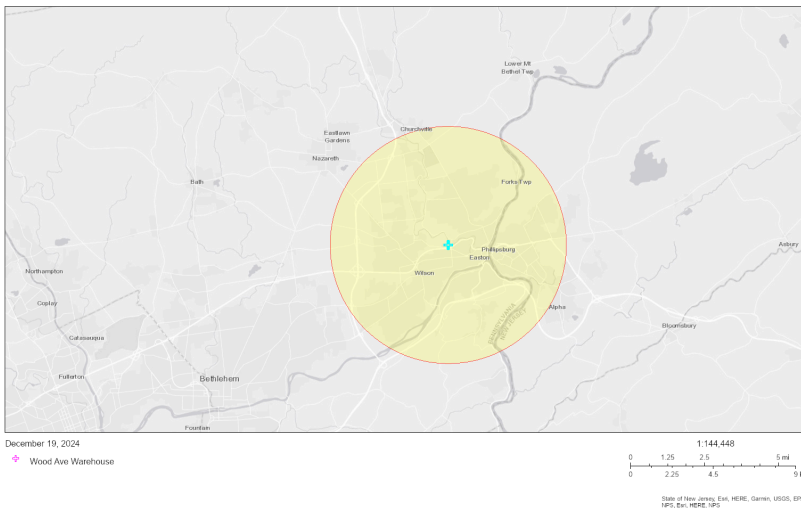
This report provides environmental and socioeconomic information for user-defined areas, and combines that data into environmental justice and supplemental indexes.

Wood Ave Warehouse

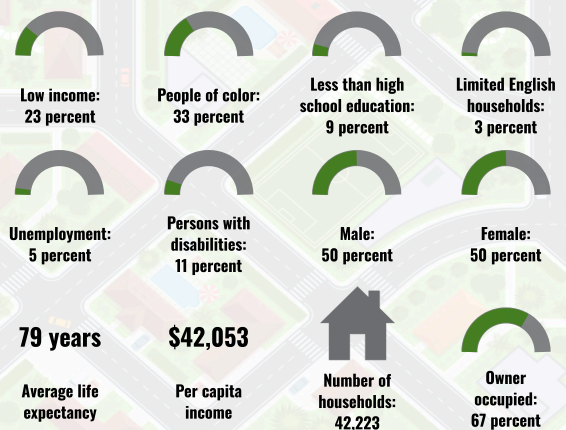
4 miles Ring Centered at 40.696176,-75.230513

Population: 108,429

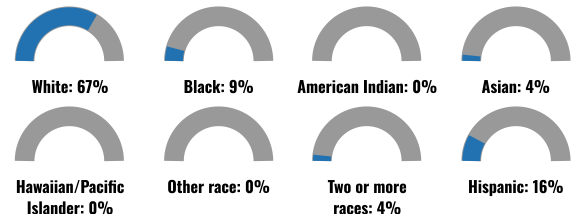
Area in square miles: 50.26



COMMUNITY INFORMATION



BREAKDOWN BY RACE



BREAKDOWN BY AGE



LIMITED ENGLISH SPEAKING BREAKDOWN



Notes: Numbers may not sum to totals due to rounding. Hispanic population can be of any race. Source: U.S. Census Bureau, American Community Survey (ACS) 2018-2022. Life expectancy data comes from the Centers for Disease Control.

LANGUAGES SPOKEN AT HOME

LANGUAGE	PERCENT
English	83%
Spanish	11%
Russian, Polish, or Other Slavic	1%
Other Indo-European	2%
Chinese (including Mandarin, Cantonese)	1%
Other and Unspecified	1%
Total Non-English	17%

Report for 4 miles Ring Centered at 40.696176,-75.230513

Report produced December 19, 2024 using EJScreen Version 2.3

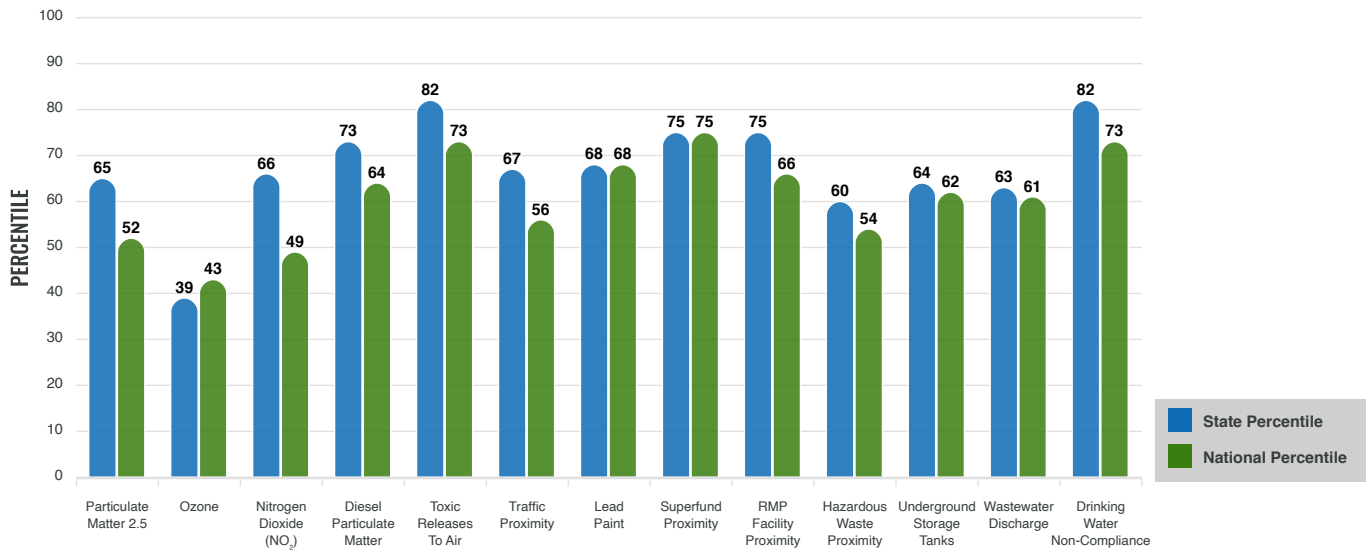
Environmental Justice & Supplemental Indexes

The environmental justice and supplemental indexes are a combination of environmental and socioeconomic information. There are thirteen EJ indexes and supplemental indexes in EJScreen reflecting the 13 environmental indicators. The indexes for a selected area are compared to those for all other locations in the state or nation. For more information and calculation details on the EJ and supplemental indexes, please visit the [EJScreen website](#).

EJ INDEXES

The EJ indexes help users screen for potential EJ concerns. To do this, the EJ index combines data on low income and people of color populations with a single environmental indicator.

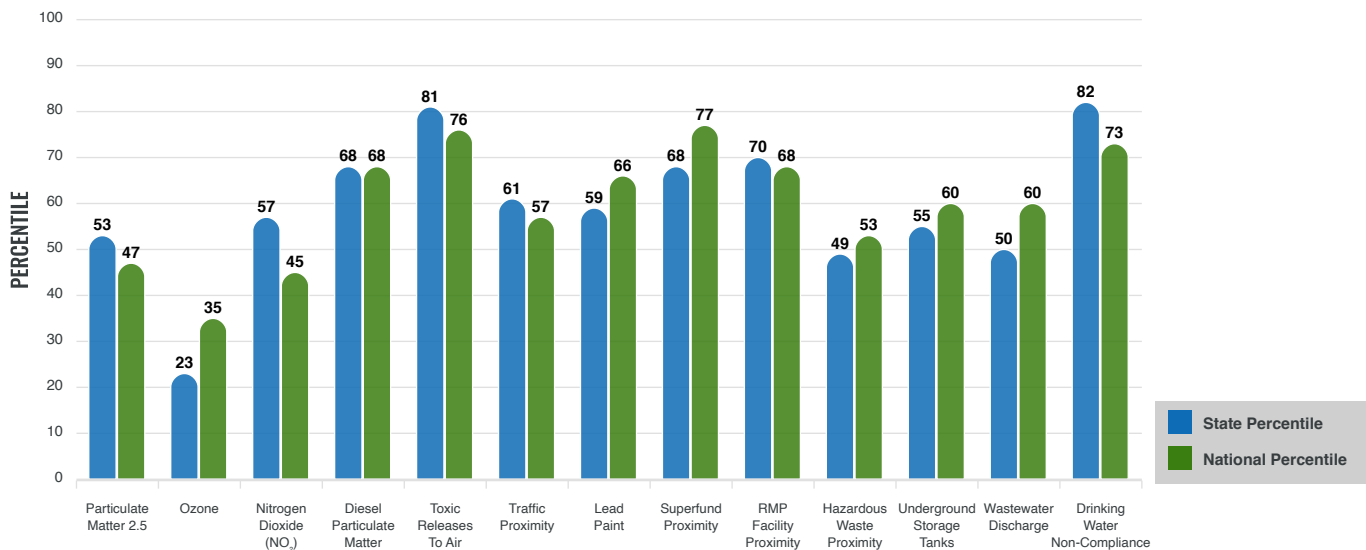
EJ INDEXES FOR THE SELECTED LOCATION



SUPPLEMENTAL INDEXES

The supplemental indexes offer a different perspective on community-level vulnerability. They combine data on percent low income, percent persons with disabilities, percent less than high school education, percent limited English speaking, and percent low life expectancy with a single environmental indicator.

SUPPLEMENTAL INDEXES FOR THE SELECTED LOCATION



Report for 4 miles Ring Centered at 40.696176,-75.230513

Report produced December 19, 2024 using EJScreen Version 2.3

EJScreen Environmental and Socioeconomic Indicators Data

SELECTED VARIABLES	VALUE	STATE AVERAGE	PERCENTILE IN STATE	USA AVERAGE	PERCENTILE IN USA
ENVIRONMENTAL BURDEN INDICATORS					
Particulate Matter 2.5 ($\mu\text{g}/\text{m}^3$)	8.12	8.13	39	8.45	48
Ozone (ppb)	57.4	59.9	25	61.8	34
Nitrogen Dioxide (NO_2) (ppbv)	6.8	6.8	55	7.8	41
Diesel Particulate Matter ($\mu\text{g}/\text{m}^3$)	0.221	0.171	70	0.191	70
Toxic Releases to Air (toxicity-weighted concentration)	5,400	4,000	85	4,600	87
Traffic Proximity (daily traffic count/distance to road)	1,100,000	1,400,000	59	1,700,000	56
Lead Paint (% Pre-1960 Housing)	0.5	0.48	52	0.3	73
Superfund Proximity (site count/km distance)	0.43	0.35	74	0.39	81
RMP Facility Proximity (facility count/km distance)	0.85	0.55	78	0.57	77
Hazardous Waste Proximity (facility count/km distance)	1.5	2.5	48	3.5	53
Underground Storage Tanks (count/km ²)	3.4	3.5	68	3.6	72
Wastewater Discharge (toxicity-weighted concentration/m distance)	280	6400	46	700000	64
Drinking Water Non-Compliance (points)	0.0077	1	82	2.2	73
SOCIOECONOMIC INDICATORS					
Demographic Index USA	1.07	N/A	N/A	1.34	46
Supplemental Demographic Index USA	1.38	N/A	N/A	1.64	40
Demographic Index State	1.16	1.14	65	N/A	N/A
Supplemental Demographic Index State	1.33	1.52	44	N/A	N/A
People of Color	33%	25%	74	40%	52
Low Income	23%	28%	47	30%	43
Unemployment Rate	5%	6%	60	6%	60
Limited English Speaking Households	3%	2%	79	5%	67
Less Than High School Education	9%	9%	63	11%	54
Under Age 5	5%	5%	53	5%	50
Over Age 64	18%	19%	50	18%	59

*Diesel particulate matter index is from the EPA's Air Toxics Data Update, which is the Agency's ongoing, comprehensive evaluation of air toxics in the United States. This effort aims to prioritize air toxics, emission sources, and locations of interest for further study. It is important to remember that the air toxics data presented here provide broad estimates of health risks over geographic areas of the country, not definitive risks to specific individuals or locations. More information on the Air Toxics Data Update can be found at: <https://www.epa.gov/haps/air-toxics-data-update>.

Sites reporting to EPA within defined area:

Superfund	1
Hazardous Waste, Treatment, Storage, and Disposal Facilities	4
Water Dischargers	175
Air Pollution	64
Brownfields	21
Toxic Release Inventory	30

Other community features within defined area:

Schools	21
Hospitals	4
Places of Worship	10

Other environmental data:

Air Non-attainment	Yes
Impaired Waters	Yes

Selected location contains American Indian Reservation Lands*	No
Selected location contains a "Justice40 (CEJST)" disadvantaged community	Yes
Selected location contains an EPA IRA disadvantaged community	Yes

Report for 4 miles Ring Centered at 40.696176,-75.230513

Report produced December 19, 2024 using EJScreen Version 2.3

EJScreen Environmental and Socioeconomic Indicators Data

HEALTH INDICATORS					
INDICATOR	VALUE	STATE AVERAGE	STATE PERCENTILE	US AVERAGE	US PERCENTILE
Low Life Expectancy	18%	20%	33	20%	36
Heart Disease	5.8	6.3	34	5.8	52
Asthma	10.3	10.9	38	10.3	55
Cancer	7	7.2	38	6.4	60
Persons with Disabilities	11.1%	14.7%	28	13.7%	38

CLIMATE INDICATORS					
INDICATOR	VALUE	STATE AVERAGE	STATE PERCENTILE	US AVERAGE	US PERCENTILE
Flood Risk	7%	11%	55	12%	54
Wildfire Risk	0%	0%	0	14%	0

CRITICAL SERVICE GAPS					
INDICATOR	VALUE	STATE AVERAGE	STATE PERCENTILE	US AVERAGE	US PERCENTILE
Broadband Internet	11%	13%	49	13%	55
Lack of Health Insurance	4%	6%	48	9%	30
Housing Burden	Yes	N/A	N/A	N/A	N/A
Transportation Access Burden	Yes	N/A	N/A	N/A	N/A
Food Desert	Yes	N/A	N/A	N/A	N/A

Report for 4 miles Ring Centered at 40.696176,-75.230513

Report produced December 19, 2024 using EJScreen Version 2.3